

KITL Room

Prepared by:

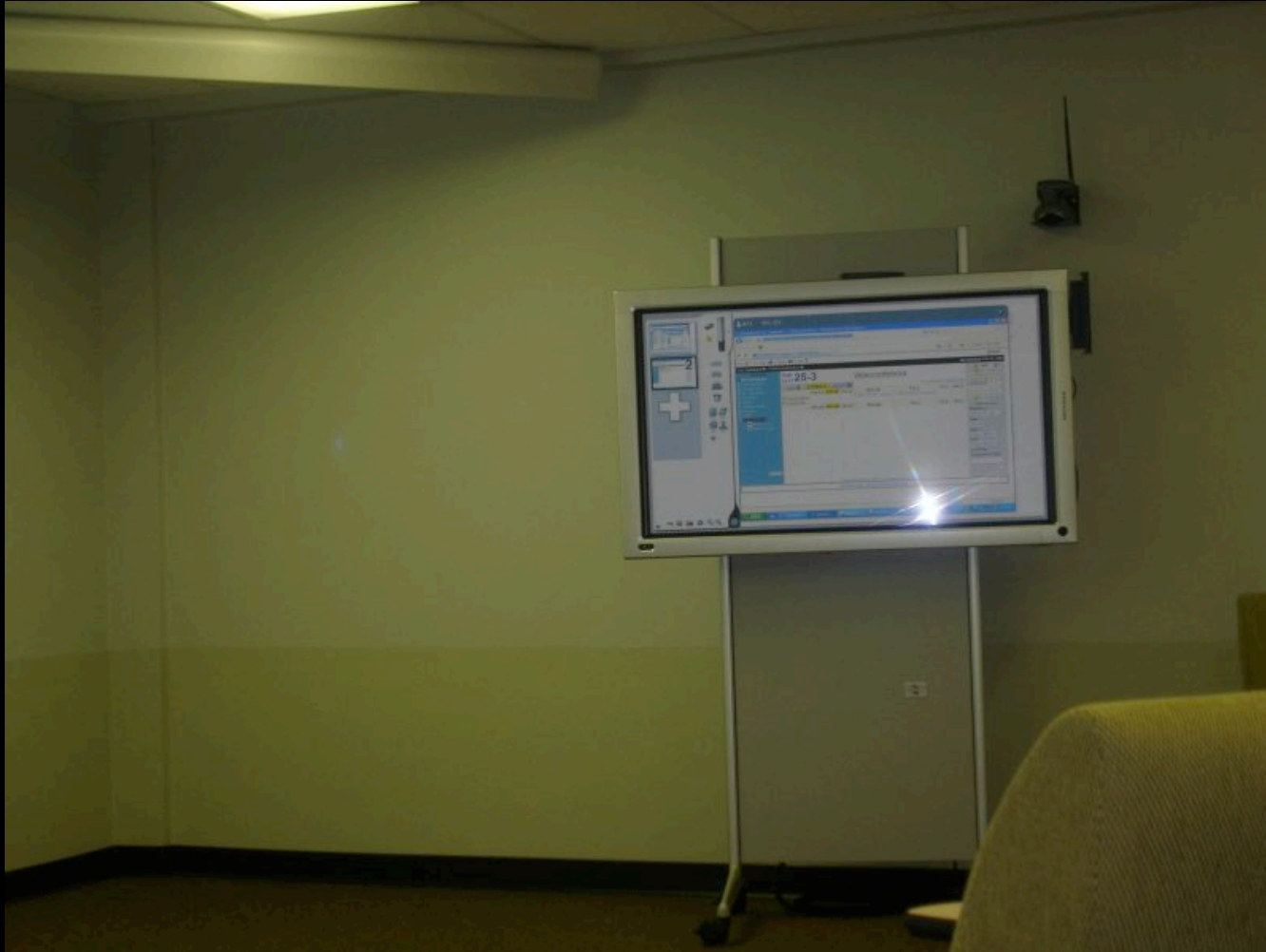
Joan Touzet, Mike Tissenbaum, Cheryl Madeira, Dan Kurtz

February 7, 2007

Background

- The Knowledge Innovation & Technology Lab (KITL), located at the Ontario Institute for Studies in Education (OISE/UT)
- State-of-the-art facility housing tools for distributive knowledge building communities
- Communication tools of interest for our KMD 1002:
 - Web-based collaboration
 - Polyvision Thunder system

Photos



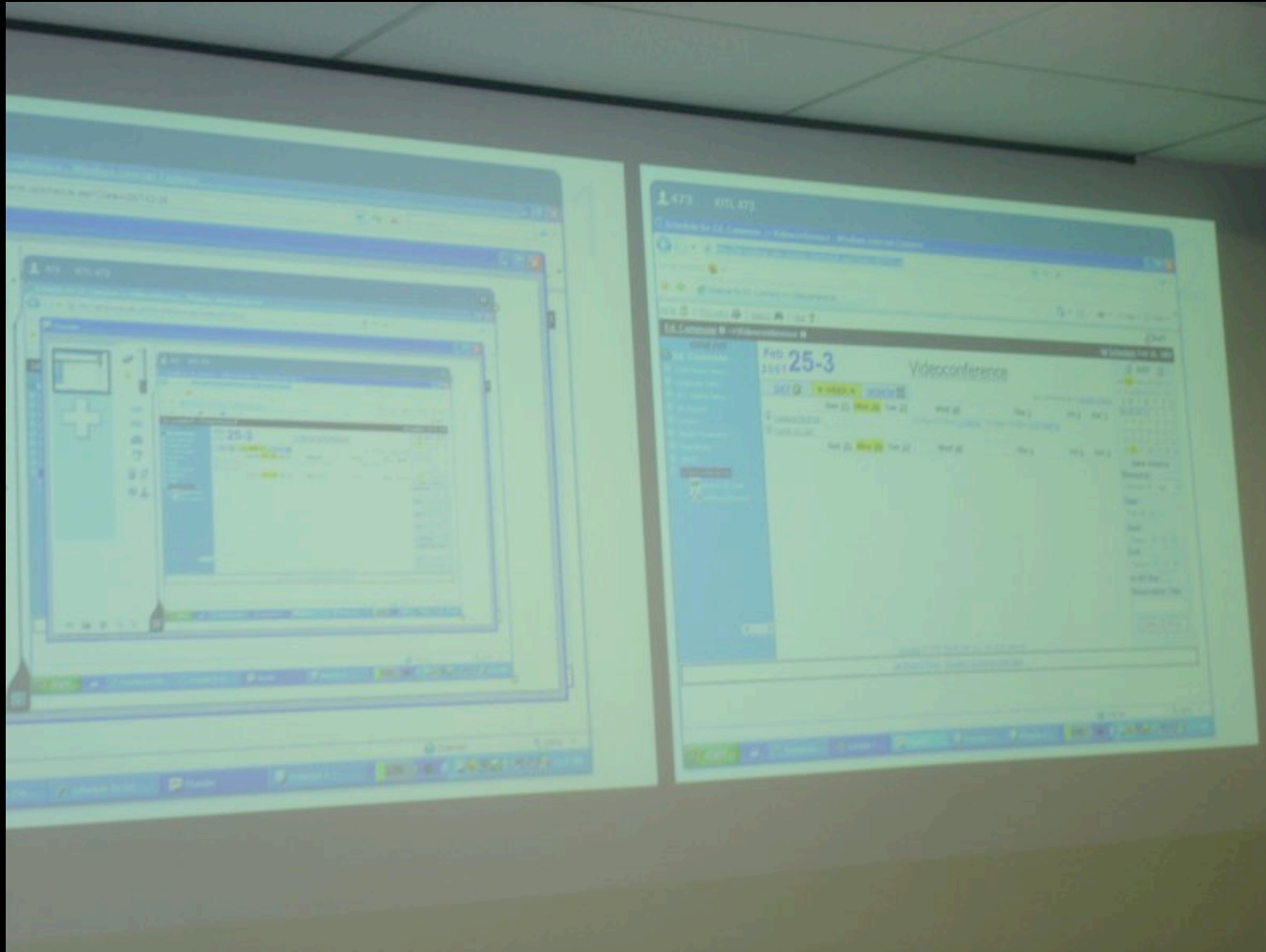
Photos



Photos



Photos



Objectives and Goals

- To record the social interaction within the KITL environment
- To understand the different ways that 'Experts' and 'Novices' use the KITL environment
- To develop an ontology of social tags in this field to allow for storage and retrieval of video artifacts created (with the goal of having these videos hosted on sites such as YouTube).

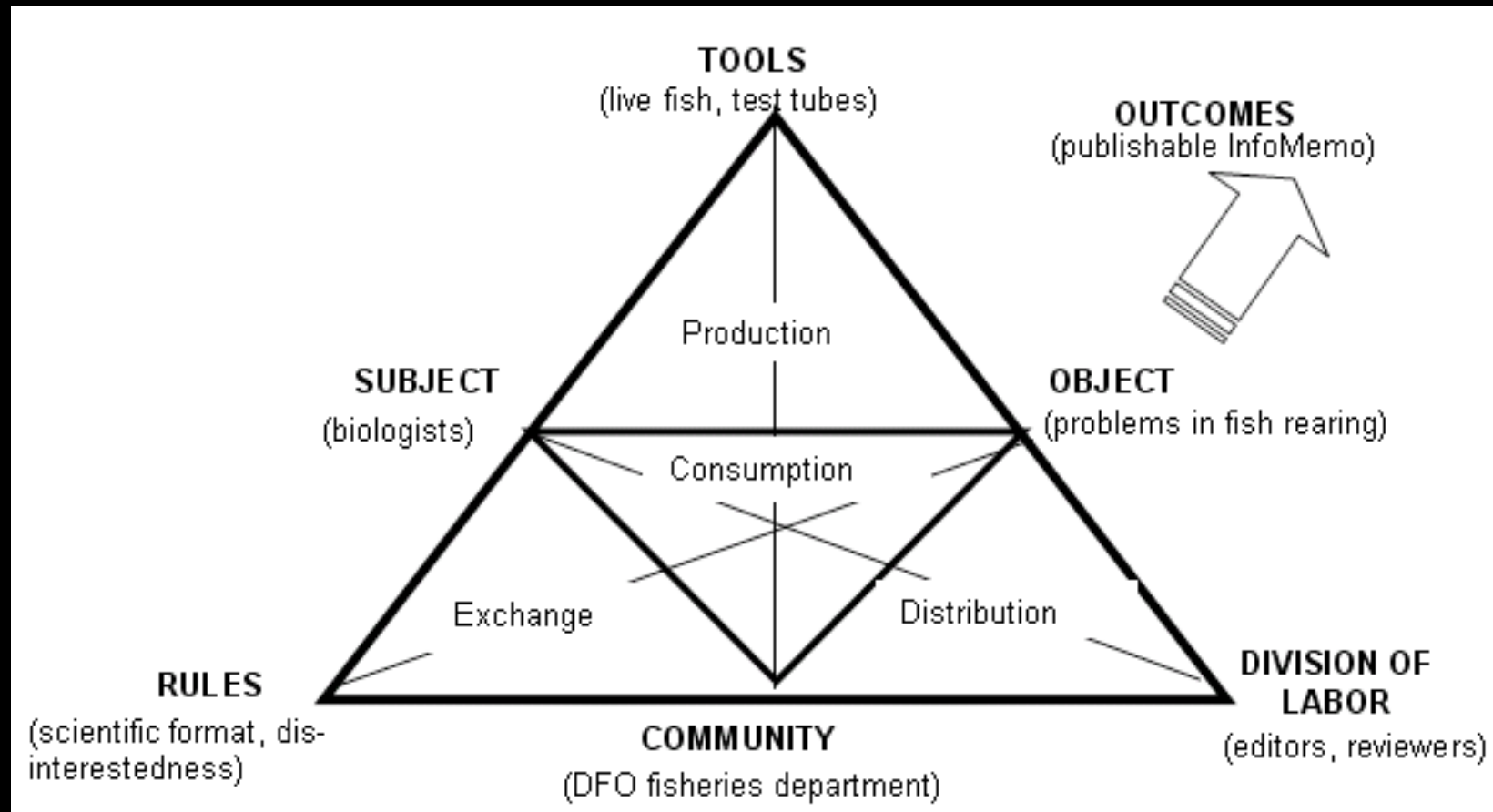
Sample Work

- SAIL is the Scalable Architecture for Interactive Learning.
- A collaborative group comprised of educators, researchers, architects, artists and technology designers
- 10 members at present
- Aims to develop “Smart Space” specification that is general enough that it can be adopted by other researchers, architects or artists.

SAIL Background

- SAIL moves learning content out of a "passive, content distribution" mode, into more of an active, distributed social mode.
- The design for SSS is meant to be accessible (as open source) within a community of developers from various fields
- SAIL Smart Space - KMDI2003 - ENCORE

Theory: Activity Theory



Methodology

- Survey (pre and post) (e.g. technology inventory)
- Video Taping
- Compiling and Tagging
- Discussion and Analysis

Broader Implications

- Create a greater understanding of individuals' use of technology for collaborative purposes
- See if the notes drawn from our examination of the recorded video is only useful as 'field notes,' or if it can be useful to the KITL architects towards building a better space